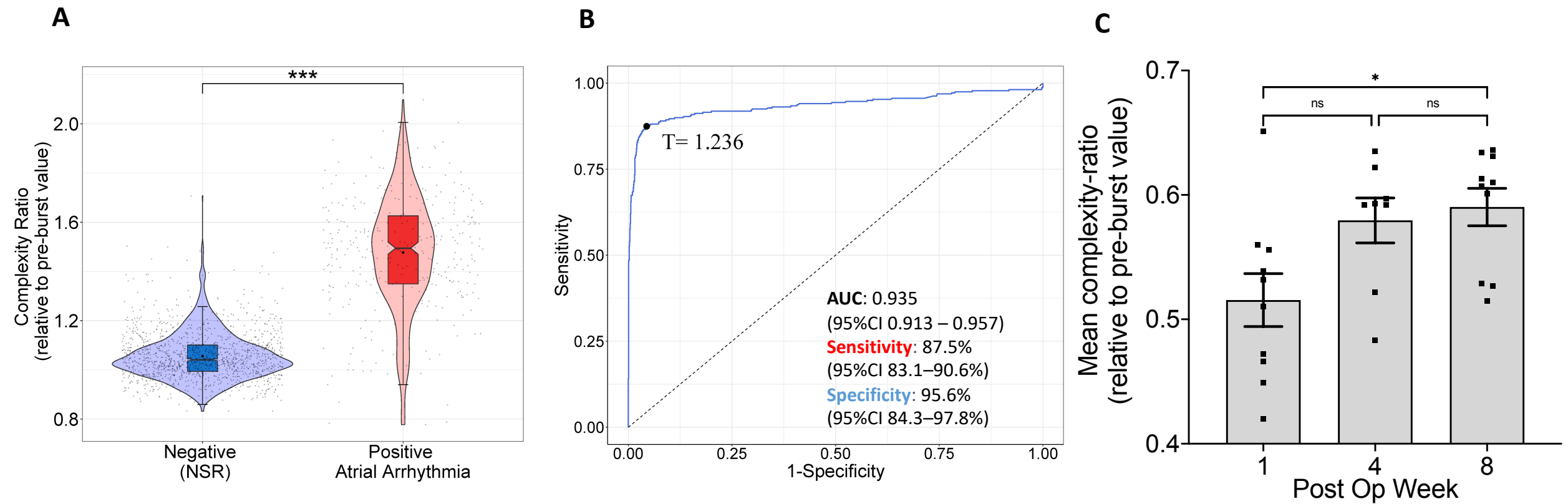


Figure 1: Automated analysis of atrial waveform complexity following atrial burst pacing



A. Violin plot indicating the probability density of the complexity-ratio values during normal sinus rhythm waveforms (NSR, negative) and atrial arrhythmia waveforms (positive). **B.** Receiver operating characteristic (ROC) analysis of the data in A. T is the optimal detection threshold between positive and negative waveforms. AUC – area under curve. **C.** Bar graph with dot plot of the complexity-ratio in implanted rats at different time point following device implantation.